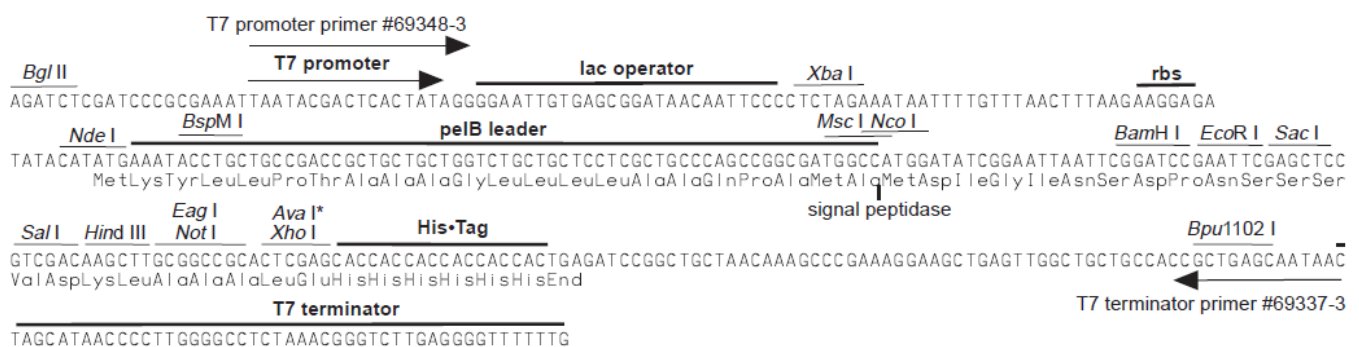


Gene umano da subclonare nel vettore plasmidico pET22-b

ATGGGTGGATTATTTCTCGATGGAGGACAAAACCTTCAACTGTAGAAGTTCTAGAAAGTATAGATAAAGGAAATTCAA
 GCATTGGAAGAATTTAGGGAAAAAATCAGAGATTACAAAATTATGGGTTGGAAGATTAATTCTGTATTCCTCAGTTC
 TCTATCTGTTTACATGCTTAATTGTATATTTGTGGTATCTTCCTGATGAATTTACAGCAAGACTTGCCATGACACTCCC
 ATTTTTGCTTTTCCATTGATCATCTGGAGCATAAGAACAGTAATTATTTCTTTTCCAAGAGAACAGAAAGAAATA
 ATGAAGCATTGGATGATTTAAAATCCCAGAGGAAAAAATACTTGAAGAAGTCATGGAAAAAGAACTTACAAGACG**G**
CTAAATTAATTCTTGAAAGGTTTGTACCGACTCAAAGAAAGCAAAGGAGTGTGAGCCGCCATCTGCTGGAGCAGCT
GTAAGTCAAGACCTGGACAAGAGATTCGTCAGCGAACTGCAGCTCAAAGAAACCTTTCTCCAACACCAGCAAGCCC
TAACCAGGGCCCTCCTCCACAAGTTCCAGTATCTCCTGGACCACCAAAGGACAGTTCTGCCCTGGTGGACCCCA
GAAAGGACTGTTACTCCAGCCCTATCATCAAATGTGTTACCAAGACATCTTGGATCCCCTGCTACTTCAGTGCCTGGA
ATGGGTCTTCATCCTCCAGGTCACCTTTAGCAAGACCTATTCTCCCCGAGAACGAGGTGCTTTGGATAGAATTGTT
GAATATTTGGTTGGTGTATGGTCCACAAACAGGTATGCA****CTTATATGTCAGCAGTGTTTTTCTCATAATGGCATGGCT
 TTGAAGGAAGAATTTGAATACATTGCTTTTCGATGTGCCTACTGTTTTTTCTTGAACCCTGCAAGAAAAACCAGACCTC
 AGGCTCCAAGACTTCCCTGAGTTTAGTTTTGAGAAGAGGCAGGTGGTGGAAAGGTTCAAGTTCAGTTGGTCCCTTGCCA
 TCAGGAAGTGTGCTTTCATCAGACAACCAGTTTAATGAAGAATCTTTAGAACACGATGTTCTTGATGATAATACAGAG
 CAGACAGATGACAAAATACCAGCTACAGAACAGACAAAACCAAGTGATTGAAAAAGCATCTGACTCAGAGGAACCAGA
 GGAGAAACAAGAGACTGAGAATGAGGAAGCCTCAGTGATTGAAACCAACTCCACAGTTCCTGGAGCTGATTCTATTC
 CTGATCCTGAACTAAGTGGAGAATCTTTGACGGCAGAGTACCCCTACGACGTGCCCGACTACGCCTGA

Disegnare i primers forward e reverse per l'inserzione del frammento genico marcato dal codone **GCT al codone **GCA** per l'inserzione corretta nel vettore plasmidico pET22-b tramite l'utilizzo di una reazione di digestione con gli enzimi di restrizione NdeI e XhoI e successiva ligazione all'interno del polylinker.**



pET-22b(+) cloning/expression region